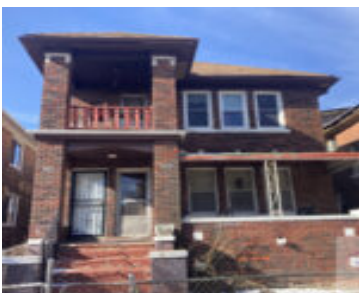


VACANT BRICK DUPLEX
<https://letsbuysomehouses.com>

9931 McQuade
Detroit, MI 48206



INVESTORS** Huge brick building in Nardin Park 1 mile west of Boston Edison. 2 massive units. Each unit contains 3 bedrooms. Monthly rents would total \$2500/mo with a low end finish. Higher end finishes could bring in \$3000/mo or more. Comps within 1/4 mile have sold at \$150k-\$175k. Rehab \$20k lower end, \$40k higher end. [...]

- 6 beds
- 2 baths
- Brick, Duplex
- Duplex
- active
- 2400 sq ft



ARS Investments

